



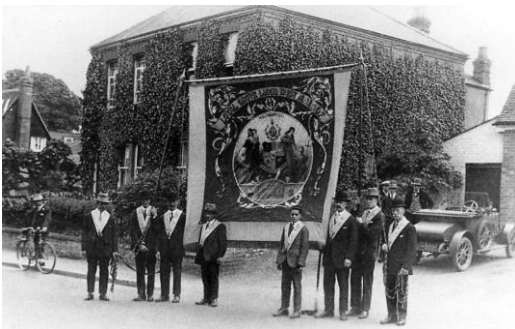
News and events

- **The Old Bakery.** The owners are waiting for St Albans Council to confirm that the planning conditions have been discharged. They will then appoint a specialist conservation contractor to make a start on the work, subject to the Covid-19 situation. Please register on the website www.theoldbakerywheathampstead.co.uk for updates.
- **Next meeting:** All our meetings are cancelled until further notice.

Notes and queries

Oddfellows

Sorting out the Society's archive of documents and photographs continues to turn up some fascinating material. This photograph shows members of the Wheathampstead branch of Oddfellows proudly displaying their banner in Church Street, perhaps ready for a parade through the village. The car in the background suggests a date in the mid-1920s. The building is now a pair of semi-detached houses, 'North View' and 'Albany Villa'.



The Oddfellows originated in the early 18th century; the Wheathampstead branch, Loyal Grove Lodge No. 157, was established at The Swan in 1844. Its annual dinner in 1846 was chaired by Charles Higby Lattimore of Place Farm. The Lodge flourished for many years, fulfilling its role as a friendly society and charitable organisation in the village. The annual dinner moved to the Bell & Crown in the late 1870s and in 1880 was shared with the local branch of the Ancient Order of Foresters.

This report appeared in the Oddfellows national magazine in August 1897.

Juvenile branch outing

Wheathampstead (Herts). The juvenile section with the Grove Lodge had a day's outing on August 23rd, going by G.N.R. excursion train to Skegness, where they arrived about 10.30 a.m. They then took a stroll round until dinner time, arrangements being made in the meantime by their conductor, Mr. O. Odell, for the mid-day meal at Turner's Dining Rooms, which was partaken of about one o'clock, to the satisfaction of the party. They then went in search of the different objects of interest, there being a few unusual attractions at this favourite resort on that day namely, a Regatta and the launching of a new lifeboat, the "Mary Jane"...

The Lodge flourished for many years. In 1911, it had 230 members and funds of £4,678 9s. 10d.

From 1912 until 1948 the Oddfellows was an Approved Society administering National Insurance contributions and benefits on behalf of the state, alongside its friendly society role providing sickness and death benefits, widows' and orphans' pensions and medical treatment for members and their dependants on a voluntary basis. At its peak, the Oddfellows had up to three million members and 4,000 branches worldwide.

The Wheathampstead Lodge later moved to the Memorial Hall and closed in about 1980, the remaining members transferring to the Flower of Hendon Lodge.

Note: we are indebted to Paul Eyre, Oddfellows historian, for much of the material in this article.